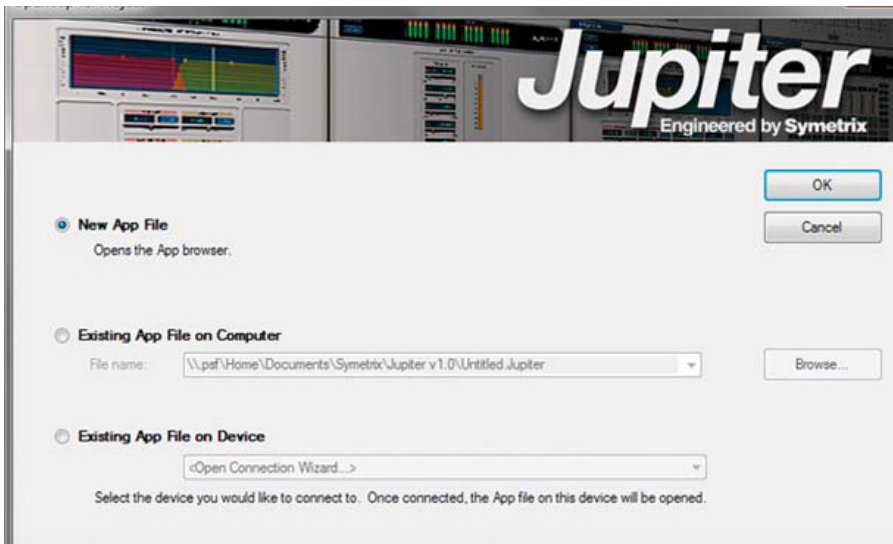


Jupiter Application Selection Guide

INTRODUCTION: Jupiter hardware runs predesigned apps. Different audio jobs are done by Jupiter by selecting and then downloading a pre-created configuration to Jupiter hardware.

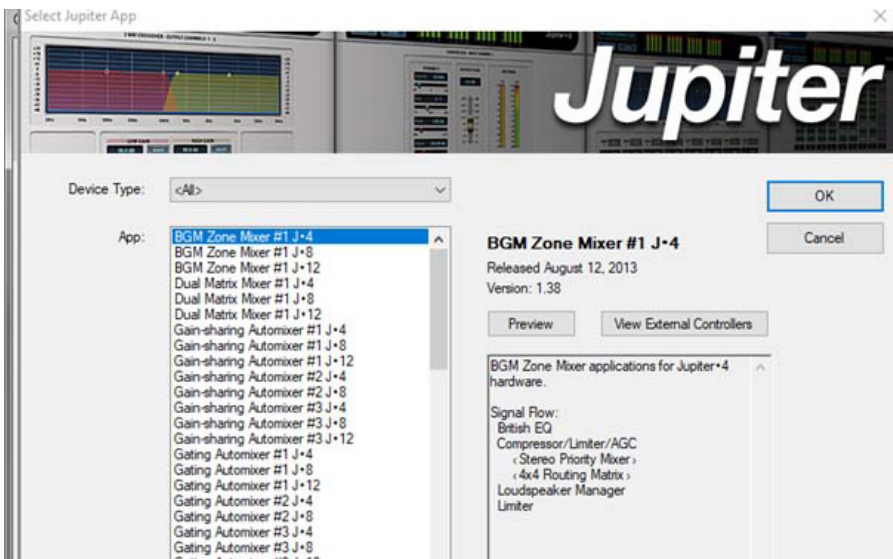
Jupiter's elegant interface makes complex signal management effortless. Jupiter provides a full complement of filters, crossovers, delay, and dynamics modules.

The purpose of this guide is to assist in the selection of the appropriate configuration file for your audio project from the App library.



GETTING STARTED:

When you start the Jupiter software you are presented with the options of opening a new app file, using an existing file on your computer or pulling a configuration from the Jupiter device. Because the purpose of this document is to assist with selecting an app file, we will start by using the "New App" option.



APP SELECTION WINDOW:

This option will bring up the app selection window where you select the appropriate app for your job.



FOR MORE INFORMATION

Contact Symetrix today at
425-778-7728 or sales@symetrix.co



Jupiter Application Selection Guide

APP ORGANIZATION AND USE CASES

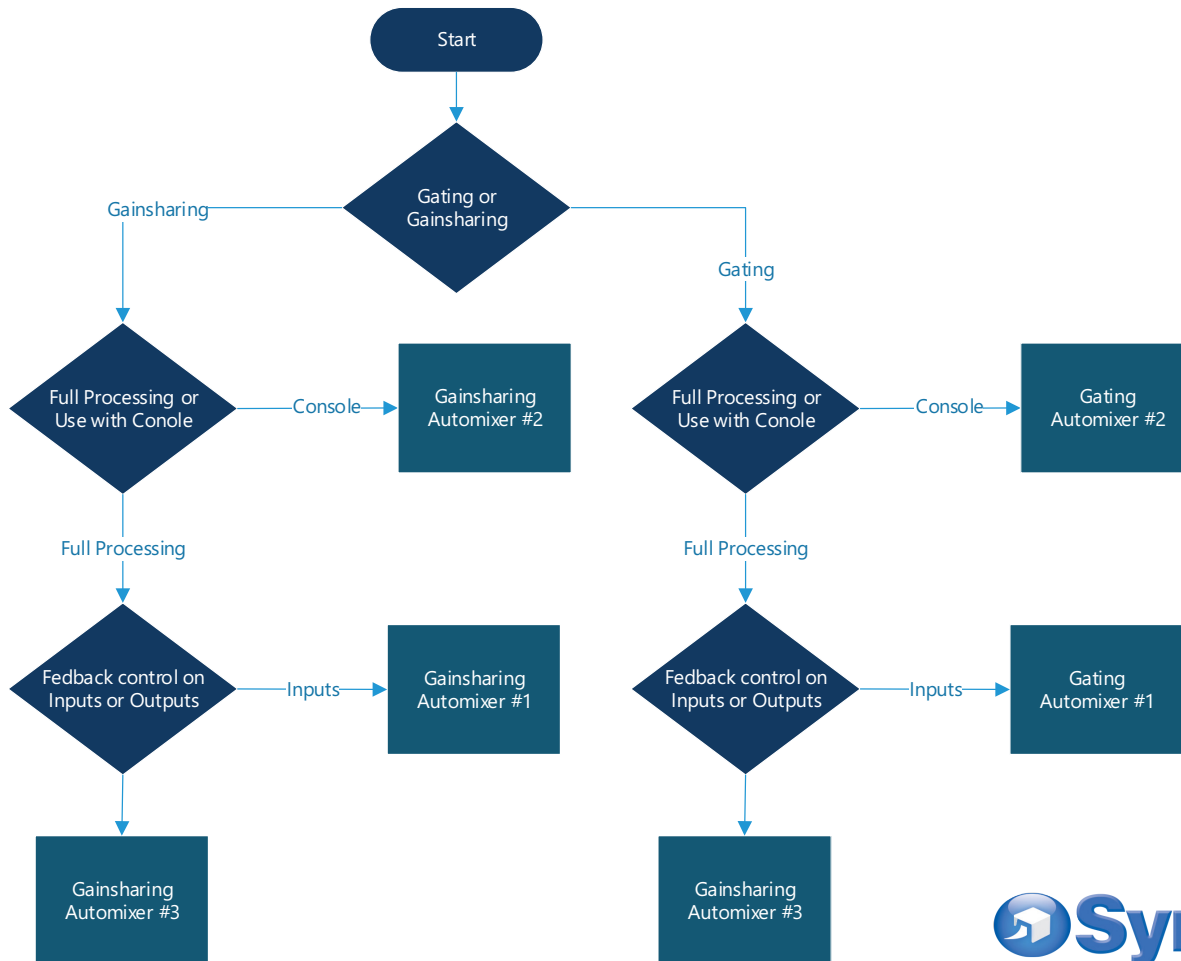
Apps are organized in the Jupiter app library into nine categories. The categories are listed in this section along with a brief use case for each category.

1. BGM Zone Mixer Applications

For applications where background music or other auxiliary audio sources need to be played. Multiple speaker zones are supported, as well as zone paging. Background music sources can be automatically muted or lowered in level (ducked) when paging takes place.

2. Automixer Applications

For applications where automatic microphone mixing is required. Use the flow chart for guidance on which automixer app to select.



FOR MORE INFORMATION
 Contact Symetrix today at
 425-778-7728 or sales@symetrix.co



Jupiter Application Selection Guide

3. Home Theater

The Home Theater apps provide speaker management and gain control. Typically, the Jupiter is placed between a surround sound processor and the system power amplifiers.

4. Input Processing

Microphone and Line processing gives direct input to output signal paths with processing on each channel.

5. Priority Zone Mixer

Multi-zone priority mixer with two microphone inputs, BGM inputs, SPL (sound pressure level compensation), and speaker management.

6. Retail SPL

Paging and BGM system with SPL (sound pressure level compensation) and speaker management for retail applications.

7. Sound Reinforcement

There are twelve App types for Sound reinforcement.

Type #1 4 way Crossover and FIR filters

Type #2 3 Way Crossover and FIR filters

Type #3 2 way crossover and FIR Filters

Type #4 Full Range Output with Stereo Main Speakers

Type #5 2 way crossover and no FIR filters

Type #6 Full range outputs, No FIR filter, and Feedback elimination on the inputs

Type #7 2 way crossover, Full range output, and no FIR filters

Type #8 2 way crossover, FIR filter, and The Clamp that provides a unique method of protecting the sound system from excessive gain.

Type #9 Full range output with FIR filters

Type #10 Full range output with FIR filters and gainsharing automixer

Type #11 Source Selector

Type #12 Full range output without FIR filter and with feedback elimination on the output

8. Stereo Mixer

The stereo mixer includes input processing, stereo audio mixing and distribution, and speaker management processing

9. Transit SPL

Ideal for paging within noise locations. Supports multiple paging locations and SPL (sound pressure level compensation) and speaker management. Does not support BGM.



FOR MORE INFORMATION

Contact Symetrix today at

425-778-7728 or sales@symetrix.co

